



## Accommodation Sheet

### General information

Accommodation name	HOTEL NEGRESCO
Typology	Hotel/Inn
Address	Viale Italico, 82
City	Forte dei Marmi (Lu)
Contacts	Tel. +39 0584 78820 - Fax +39 0584 787535 <a href="mailto:info@hotelilnegresco.com">info@hotelilnegresco.com</a>
Website	<a href="http://www.hotelilnegresco.com">www.hotelilnegresco.com</a>
Accessible website compliant with WCAG 2.1	NO
Online bookings	YES
Short description	Situated on the renowned Lungomare di Forte dei Marmi in Versilia, Hotel il Negresco, known for its elegance, refinement and warm welcome, is a sophisticated 4-star hotel overlooking the Tyrrhenian Sea, one of the most renowned seaside destinations in Tuscany.

TESTED AND REVIEWED BY: [Handy Superabile Social Promotion Association](#) in 2024

**Please note** The following information refers to the verification date reported at the bottom of each sheet. The Association is not responsible for any significant changes made by the facility after the visit.





## Summary

Accommodation Sheet.....	1
General information .....	1
Arrival at the facility.....	3
How to reach the property.....	3
Pathway from private/public parking to the entrance .....	4
Entrance to the building .....	6
Hall - Reception .....	7
Rooms/apartments .....	9
Rooms/apartments adapted for guests with reduced mobility.....	9
Toilet in the guest room for people with reduced mobility .....	10
Bar/Restaurant.....	12
Internal pathways and common services .....	14
Internal pathways.....	14
Common toilets.....	14
Pool.....	16
Medical offices/healthcare facilities.....	17





## Arrival at the facility

### How to reach the property

By car	<p>FROM GENOA: A12 motorway southbound, Versilia exit.</p> <p>FROM MILAN: Take the A1 motorway southbound near Parma and join the A15 until you reach La Spezia, where you join the A12 southbound until the Versilia exit.</p> <p>FROM FLORENCE: Take the Firenze-Mare A11 motorway to Lucca, then take the motorway link to Viareggio northbound to the Versilia exit.</p> <p>FROM ROME: A1 motorway to Florence, then take the A11 to Lucca, then take the motorway link to Viareggio northbound to the Versilia exit.</p> <p>From the Versilia exit follow the signs for Forte Dei Marmi</p>
By plane	<p>The closest airport to Hotel Il Negresco is Pisa G. Galilei Airport, which is approximately 45 km away. At the airport, boarding/disembarking passengers with reduced mobility is done with an ambulift, a special vehicle equipped with a ramp - mobile lounge - with a lifting platform to facilitate boarding for passengers in wheelchairs; they are also guaranteed complete assistance on departure/arrival.</p> <p>Assistance staff is available to accompany the disabled passenger, during baggage delivery, up to the boarding gate or baggage claim.</p> <p>The terminal is equipped with elevators with external and internal Braille buttons and "assistance call" columns (see photo above right). The security checkpoints are designed to accommodate passengers with</p>

Project realized with the contribution of the





	<p>wheelchairs and pacemaker wearers. In the external and internal routes there are LOGES routes complete with tactile maps to facilitate the movement of blind and visually impaired people.</p> <p>In the internal areas of the airport there are very spacious toilets equipped for people with reduced mobility. The toilet is equipped with support handles, fixed to the wall on one side and reclining on the other side. The sink with lever tap has enough space to approach with a wheelchair.</p> <p>For the transfer from the airport it is possible to rent a vehicle adapted for driving, with hand controls</p>
By train	
Nearest station	Railway station. Querceta / Seravezza (distance 5 km) and does not provide assistance service for passengers with disabilities while this service is available at the stations of Massa and Viareggio, 11 and 18 km away respectively.
Assistance service for people with disabilities	NO

### Pathway from private/public parking to the entrance

Presence of private parking	YES for a fee
Presence of parking space reserved for disabled people	NO
Type of private parking flooring	tiles
Public parking nearby	YES
Type of public parking pavement	asphalt
Presence of parking space reserved for disabled people in public parking	YES no.1 every 30/50 m
Describe the route from the parking lot to the entrance and any critical issues	The external entrance is accessible via a 68 cm long ramp with an 18% slope. At the main entrance there are 12 steps and the







door has two doors each of 70 cm. From the private parking via a ramp on the right, 90 cm long, 75 cm wide, 8% slope or via a short connecting ramp on the left, 16 cm long, 39% slope.





**Entrance to the building**

<p>There is an accessible entrance</p>	<p>YES secondary entrance</p>
<p>How to access the facility</p>	<p><input checked="" type="checkbox"/> via elevator door width 68 cm, cabin width 97 cm, cabin depth 120 cm</p>
	
<p>Any notes</p>	<p>The main common areas are accessible by a lift (secondary entrance of the hotel) with a 68 cm wide sliding door. The call button is</p>





	<p>105 cm from the ground, the cabin is 97X120 cm wide, the internal keypad of the lift is 130 cm high (braille).</p> <p>An audible warning is provided on the floors.</p>
--	--

## Hall - Reception

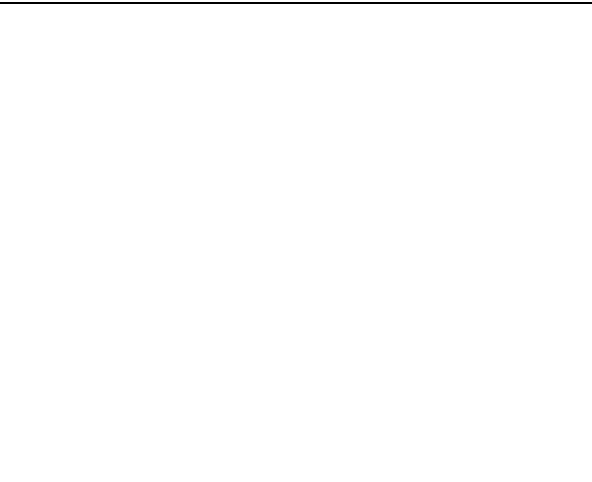
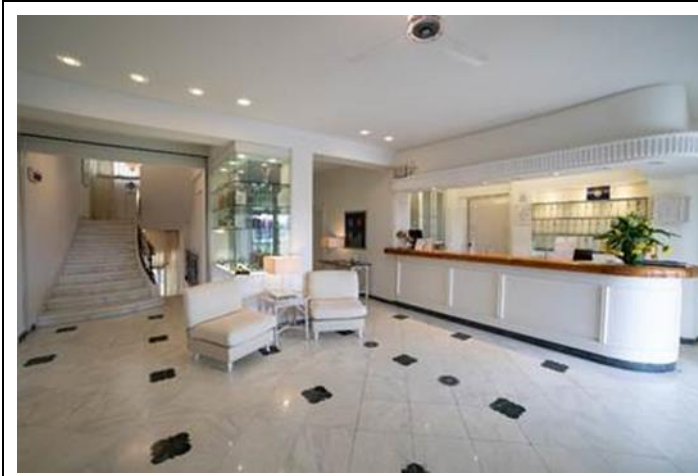
How to get there from the entrance	on the flat
Reception desk height	bench higher than 100 cm
Presence of multilingual staff	YES
Type of information material	<input type="checkbox"/> YES with tactile maps/signs <input checked="" type="checkbox"/> YES with brochure
Initial assistance is provided for visitors with disabilities	<input checked="" type="checkbox"/> YES with orientation tour of the structure <input type="checkbox"/> YES with accompaniment to the room <input type="checkbox"/> YES with porterage service
The following aids are provided for visitors with disabilities	<input type="checkbox"/> manual wheelchair <input type="checkbox"/> crutches <input type="checkbox"/> comfortable shower chair
The staff has attended a training course on welcoming people with different disabilities	NO
Any notes	A minivan is available for customers to reach the center



Project promoted by



**Regione Toscana**



Project realized with the contribution of the



**Presidenza del  
Consiglio dei Ministri**  
Ministro per la disabilità



## Rooms/apartments

### Rooms/apartments adapted for guests with reduced mobility

Number and type of rooms/apartments equipped/usable by people with reduced mobility	<input checked="" type="checkbox"/> triple roomsno.1
Access to the room	<input checked="" type="checkbox"/> on the same floor as the reception
Bed type and height	54cm high double bed
Free spaces on the sides of the bed	left80 cm To the rightgreater than 90 cm front84 cm
Cabinet type	with doors
Free space under the desk	75 cm
They are available in the room	<input type="checkbox"/> safe <input type="checkbox"/> mini-bar <input type="checkbox"/> water boiler <input type="checkbox"/> iron
There is a terrace/balcony/garden (useful width of door)	balcony/veranda with useful door width 75 cm
Access methods	via a 4 cm high and 75 cm wide threshold/guide
Any notes	The triple room visited n° 101 is located on the 1st floor to the right of the reception; it is accessed by passing through two doors: the first is 73 cm wide and the second 81 cm; the narrowest point of the internal corridor is 85 cm. There is a sofa bed in the room





### Toilet in the guest room for people with reduced mobility

Access to the premises	on the flat
Usable width of entrance door	84 cm
Toilet height	50 cm
Toilet seat with open front tooth	YES
Support handles	to the right of the toilet
Flexible shower head next to the toilet	NO
Free space on the sides of the toilet	left greater than 90 cm





	To the right 22 cm front 69 cm
Electric bell/telephone next to toilet	NO
Sink with space underneath for wheelchair access	61 cm
Height from ground to lower edge of mirror	sufficient for use by a person in a wheelchair
	
	
Shower accessible to guests with reduced mobility available	YES floor level
Shower type	with box
Shower chair	Folding wall seat 30 cm wide, 28 cm long and 71 cm high





Support handle	YES
Presence of shower head or shower rail	up and down with lowest point reachable by a seated person
Shower side electric bell/telephone	YES but not reachable while sitting

## Bar/Restaurant

Type of premises	Bar/Restaurant
Access to the premises	<input checked="" type="checkbox"/> on the flat
Usable width of door/entrance opening	greater than 90 cm
Bar counter height	greater than 100 cm
Buffet counter height	Height 68 to 77 cm
Type of tables	Bar smoking tables. 4-leg restaurant
Space under the floor tables	Restaurant 68 cm. Bar lack of space
Availability of high chairs for babies	YES
Multilingual menu	not detected
Menu with app	not detected
Braille menu	NO
Table service for people with disabilities	YES
Availability of food for celiacs	<input checked="" type="checkbox"/> bread <input checked="" type="checkbox"/> pasta <input checked="" type="checkbox"/> cookies <input type="checkbox"/> ice creams <input checked="" type="checkbox"/> pre-packaged foods
It is possible to always reserve the same table for a customer with reduced mobility	YES
There are toilets that can be used by a guest with reduced mobility (see "accessible toilets in internal routes and common services)	YES
There is a reserved area for lunch for little guests	NO



Project promoted by



Regione Toscana

A fully equipped bottle-feeding service is available

Not detected



Project realized with the contribution of the



Presidenza del  
Consiglio dei Ministri  
Ministro per la disabilità



<p>The venue has a veranda/outdoor terrace</p>	<p>NO</p>

## Internal pathways and common services

### Internal pathways

<p>From the room visited to the common areas there are maps and tactile signals for the blind</p>	<p>NO</p>
---	-----------

### Common toilets

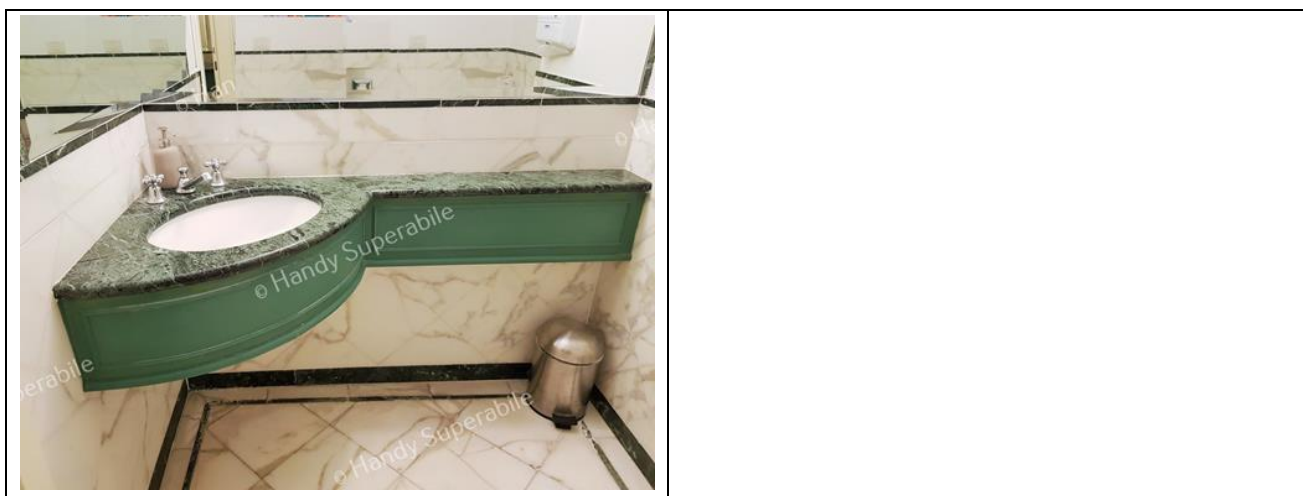
<p>Location of the premises</p>	<p>The accessible toilet for guests with reduced mobility is reachable by lift and is located on floor -1.</p>
<p>How to access the premises</p>	<p>on the flat</p>
<p>Usable width of entrance door</p>	<p>Two 90cm entrance doors</p>
<p>Door type</p>	<p>with a door that opens outwards</p>
<p>Handle type</p>	<p>with lever</p>
<p>Toilet height</p>	<p>51 cm</p>





Toilet seat with open front tooth	YES
Support handles	missing
Flexible shower head next to the toilet	Choose an item.
Free space on the sides of the toilet	left 25 cm To the right greater than 90 cm front greater than 90 cm
Electric bell/telephone next to toilet	YES
Sink with space underneath for wheelchair access	greater than 70 cm
Height from ground to lower edge of mirror	sufficient for use by a person in a wheelchair
Baby changing table	not detected
	





## Pool

The property has a swimming pool	for adults and children with fresh water
Tub with conditioned water	NO
Access to the swimming pool	with a 9 cm step that can be overcome via a metal connecting ramp 80 cm wide and 17 cm long with a 52% gradient.
Usable width of entrance passage	greater than 90 cm
Access to the tub	via ramp with steps
Bathing aids for guests with reduced mobility	not present
Depth of the pool	variable from 70 cm to 140 cm
Height of the pool edge - water level	10 cm
There is a shower in the pool area	YES floor level
Any notes	The adult pool has a hydromassage and shaped loungers in the pool. On the front side facing the seafront there is another entrance but with a useful width of 55 cm due to the shrub on the left side





## Medical offices/healthcare facilities

Hospitals near the facility	Versilia Hospital Via Aurelia n. 335 - 55049 Lido di Camaiore LU Tel +39 0584 6051
Any dialysis facilities	Dialysis service at Croce Verde Viale Italice, corner of Via Risorgimento, Tel. +39 0584 84013
Other health facilities	San Camillo Nursing Home Via Padre Ignazio da Carrara, 37, Vittoria Apuana Tel +39 05847391

